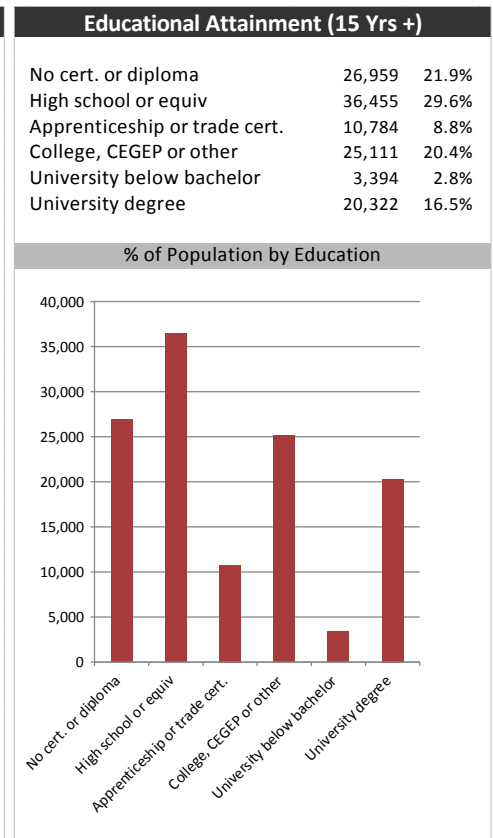
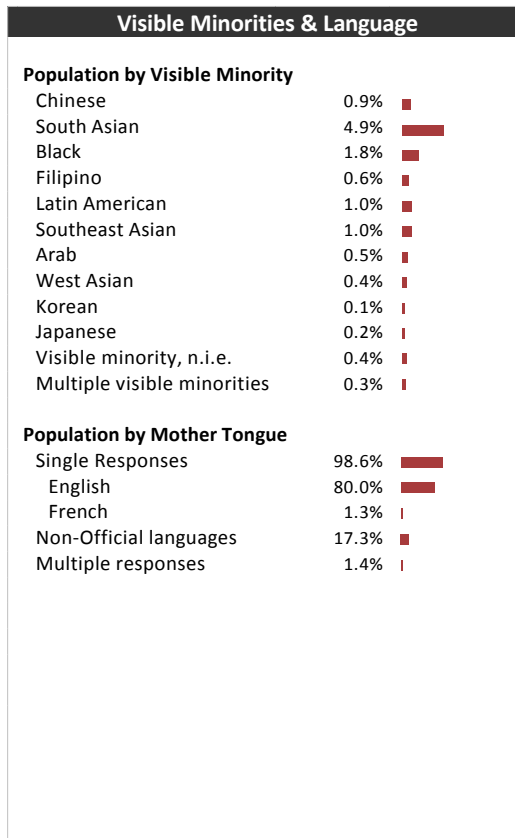
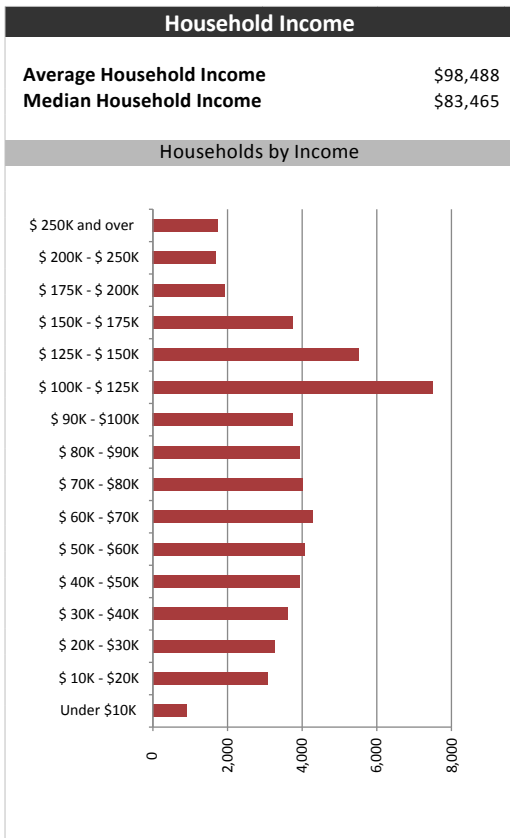
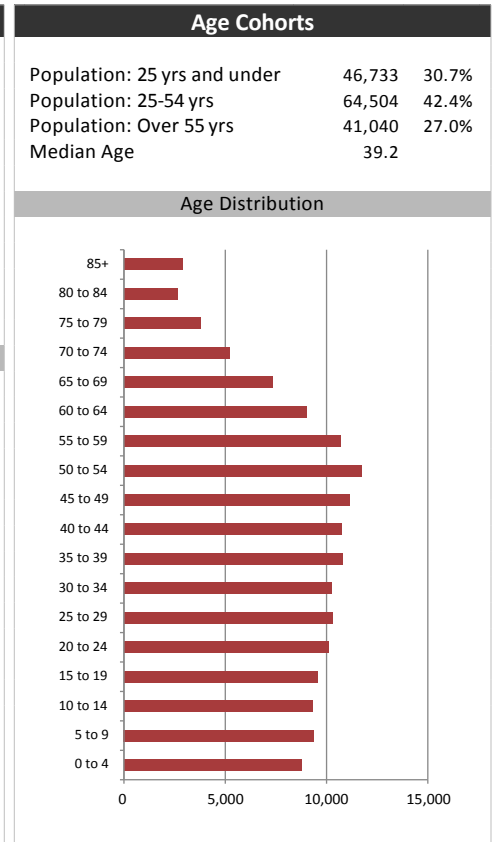
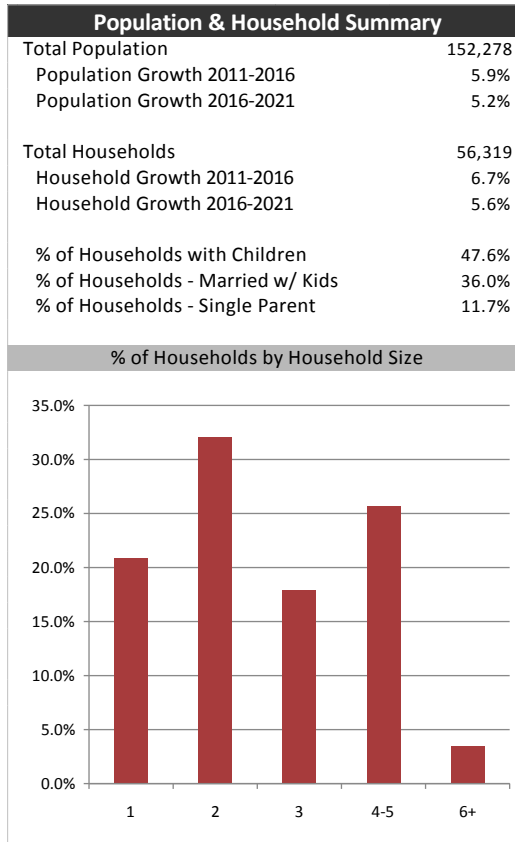


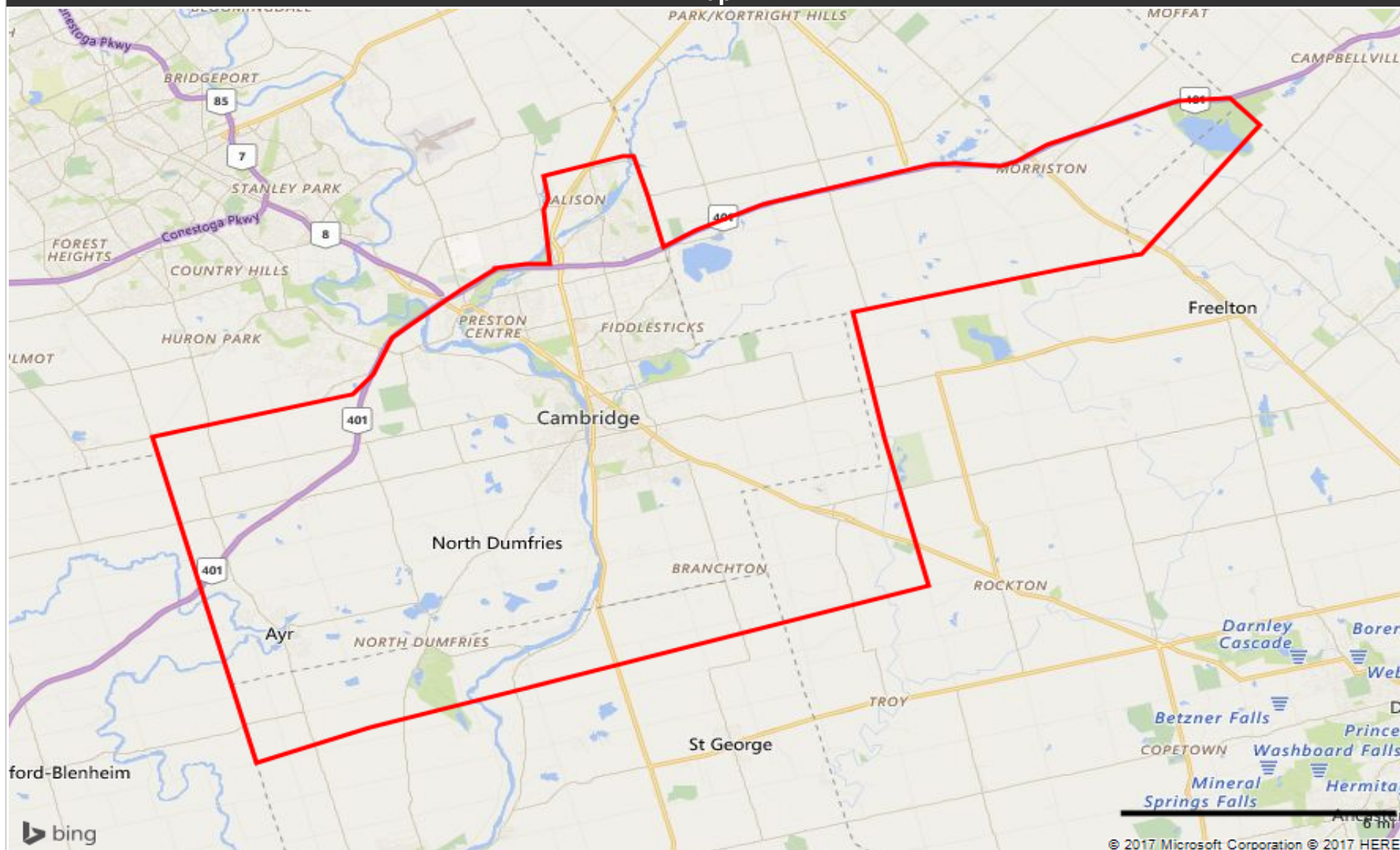
Market Information		
Average Household Spending / Yr		
Mortgage payments	\$	7,875
Cell Phone, Pager & Services	\$	1,063
Internet Access Services	\$	503
Home Renovations	\$	314
Retirement & pension fund payments	\$	1,435
Lotteries	\$	813
Health Insurance	\$	622
Household appliances	\$	671
Furnishings	\$	1,395
Computer hardware	\$	256
Auto/Truck Purchase	\$	4,964
Auto/Truck Rental or Lease	\$	800
Air Travel	\$	556
Age of Home Owners		
15 to 24 years	1,461	2.6%
25 to 34 years	9,127	16.2%
35 to 44 years	11,409	20.3%
45 to 54 years	12,547	22.3%
55 to 64 years	10,295	18.3%
65 to 74 years	7,007	12.4%
75 years or over	4,473	7.9%



Cambridge Times-TH

Distribution Map

Map



Market Information

Average Household Spending / Yr

Mortgage payments	\$	7,745
Cell Phone, Pager & Services	\$	1,053
Internet Access Services	\$	500
Home Renovations	\$	293
Retirement & pension fund payments	\$	1,380
Lotteries	\$	794
Health Insurance	\$	601
Household appliances	\$	638
Furnishings	\$	1,354
Computer hardware	\$	254
Auto/Truck Purchase	\$	4,763
Auto/Truck Rental or Lease	\$	778
Air Travel	\$	535

Age of Home Owners

15 to 24 years	1,419	2.8%
25 to 34 years	8,593	16.8%
35 to 44 years	10,656	20.8%
45 to 54 years	11,210	21.9%
55 to 64 years	9,129	17.9%
65 to 74 years	6,201	12.1%
75 years or over	3,920	7.7%

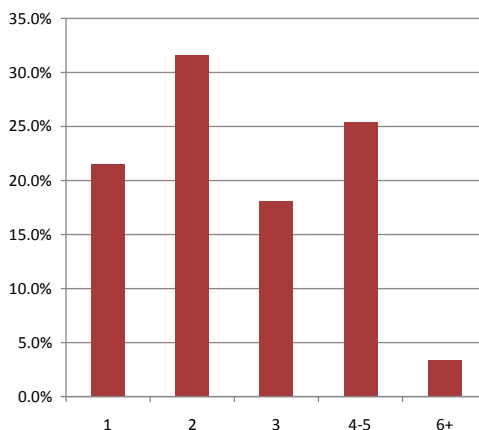
Population & Household Summary

Total Population	137,668
Population Growth 2011-2016	6.0%
Population Growth 2016-2021	5.2%

Total Households	51,129
Household Growth 2011-2016	6.7%
Household Growth 2016-2021	5.5%

% of Households with Children	48.0%
% of Households - Married w/ Kids	35.8%
% of Households - Single Parent	12.2%

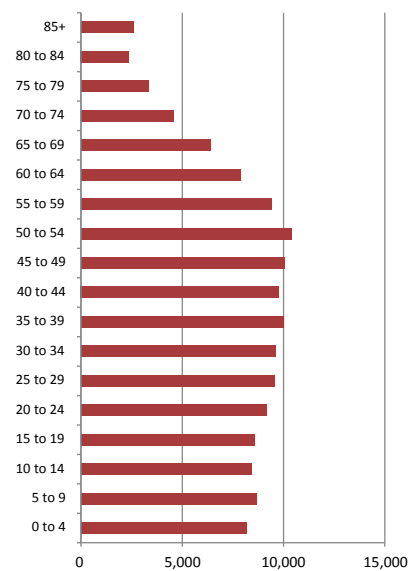
% of Households by Household Size



Age Cohorts

Population: 25 yrs and under	42,630	31.0%
Population: 25-54 yrs	58,950	42.8%
Population: Over 55 yrs	36,088	26.2%
Median Age	38.6	

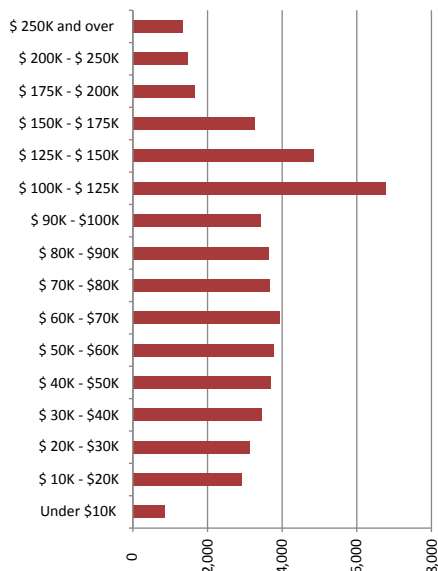
Age Distribution



Household Income

Average Household Income	\$95,490
Median Household Income	\$81,379

Households by Income



Visible Minorities & Language

Population by Visible Minority

Chinese	1.0%
South Asian	5.3%
Black	1.9%
Filipino	0.7%
Latin American	1.1%
Southeast Asian	1.1%
Arab	0.6%
West Asian	0.4%
Korean	0.1%
Japanese	0.2%
Visible minority, n.i.e.	0.4%
Multiple visible minorities	0.3%

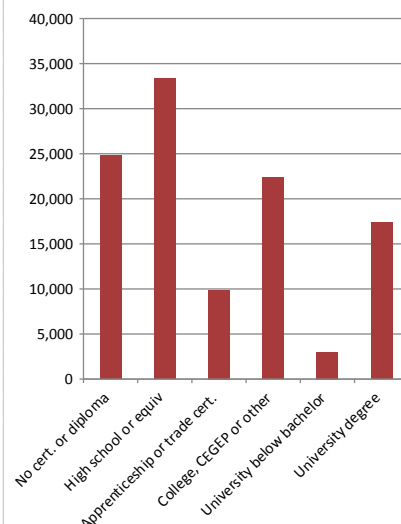
Population by Mother Tongue

Single Responses	98.5%
English	79.1%
French	1.4%
Non-Official languages	18.0%
Multiple responses	1.5%

Educational Attainment (15 Yrs +)

No cert. or diploma	24,801	22.4%
High school or equiv	33,353	30.1%
Apprenticeship or trade cert.	9,884	8.9%
College, CEGEP or other	22,401	20.2%
University below bachelor	3,009	2.7%
University degree	17,372	15.7%

% of Population by Education



Cambridge Times-TU

Distribution Map

Map

