

Market Information

Average Household Spending / Yr		
Mortgage payments	\$	6,578
Cell Phone, Pager & Services	\$	1,119
Internet Access Services	\$	499
Home Renovations	\$	642
Retirement & pension fund payments	\$	1,598
Lotteries	\$	755
Health Insurance	\$	432
Household appliances	\$	675
Furnishings	\$	1,157
Computer hardware	\$	236
Auto/Truck Purchase	\$	7,182
Auto/Truck Rental or Lease	\$	98
Air Travel	\$	542

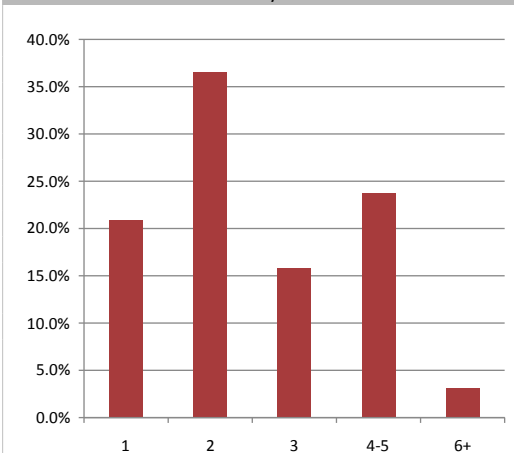
Age of Home Owners

15 to 24 years	97	2.4%
25 to 34 years	418	10.3%
35 to 44 years	530	13.1%
45 to 54 years	810	20.1%
55 to 64 years	993	24.6%
65 to 74 years	591	14.6%
75 years or over	597	14.8%

Population & Household Summary

Total Population	10,611
Population Growth 2012-2017	0.6%
Population Growth 2017-2022	2.3%
Total Households	4,037
Household Growth 2012-2017	2.8%
Household Growth 2017-2022	2.3%
% of Households with Children	42.2%
% of Households - Married w/ Kids	32.8%
% of Households - Single Parent	9.4%

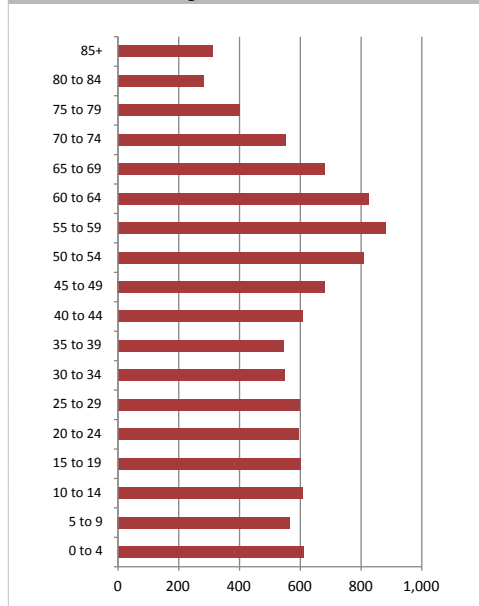
% of Households by Household Size



Age Cohorts

Population: 25 yrs and under	2,957	27.9%
Population: 25-54 yrs	3,759	35.4%
Population: Over 55 yrs	3,895	36.7%
Median Age	45.5	

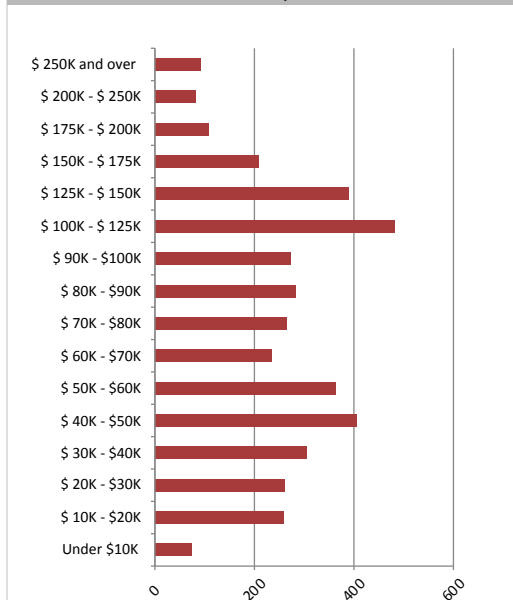
Age Distribution



Household Income

Average Household Income	\$89,394
Median Household Income	\$75,203

Households by Income



Visible Minorities & Language

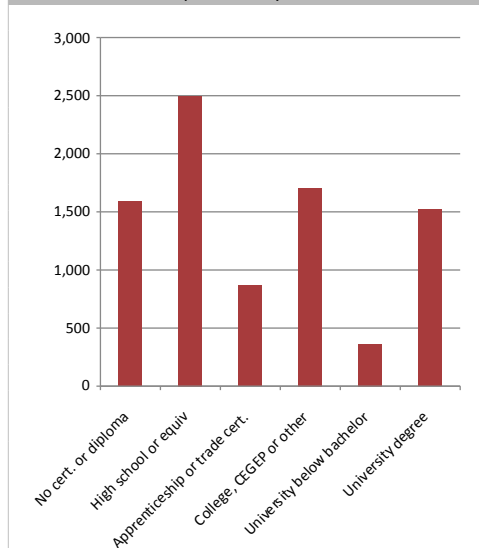
Population by Visible Minority	
Chinese	0.1%
South Asian	0.4%
Black	0.9%
Filipino	0.0%
Latin American	0.1%
Southeast Asian	0.0%
Arab	0.0%
West Asian	0.0%
Korean	0.1%
Japanese	0.2%
Visible minority, n.i.e.	0.0%
Multiple visible minorities	0.0%

Population by Mother Tongue	
Single Responses	99.5%
English	94.3%
French	1.1%
Non-Official languages	4.1%
Multiple responses	0.5%

Educational Attainment (15 Yrs +)

No cert. or diploma	1,589	18.6%
High school or equiv	2,496	29.2%
Apprenticeship or trade cert.	868	10.2%
College, CEGEP or other	1,705	20.0%
University below bachelor	363	4.2%
University degree	1,519	17.8%

% of Population by Education



Creemore Echo

Map

