

Market Information

Average Household Spending / Yr		
Mortgage payments	\$	10,891
Cell Phone, Pager & Services	\$	1,811
Internet Access Services	\$	679
Home Renovations	\$	3,478
Retirement & pension fund payments	\$	2,176
Lotteries	\$	1,207
Health Insurance	\$	838
Household appliances	\$	962
Furnishings	\$	2,903
Computer hardware	\$	492
Auto/Truck Purchase	\$	11,425
Auto/Truck Rental or Lease	\$	357
Air Travel	\$	2,200

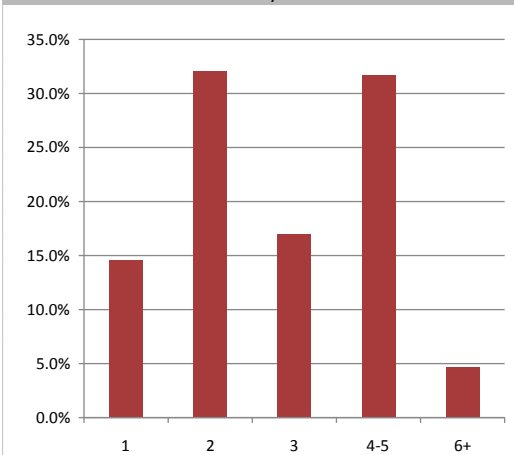
Age of Home Owners

15 to 24 years	73	1.0%
25 to 34 years	514	6.8%
35 to 44 years	1,253	16.5%
45 to 54 years	1,853	24.5%
55 to 64 years	1,795	23.7%
65 to 74 years	1,138	15.0%
75 years or over	949	12.5%

Population & Household Summary

Total Population	22,354
Population Growth 2012-2017	8.0%
Population Growth 2017-2022	7.5%
Total Households	7,575
Household Growth 2012-2017	8.7%
Household Growth 2017-2022	7.9%
% of Households with Children	52.4%
% of Households - Married w/ Kids	44.6%
% of Households - Single Parent	7.9%

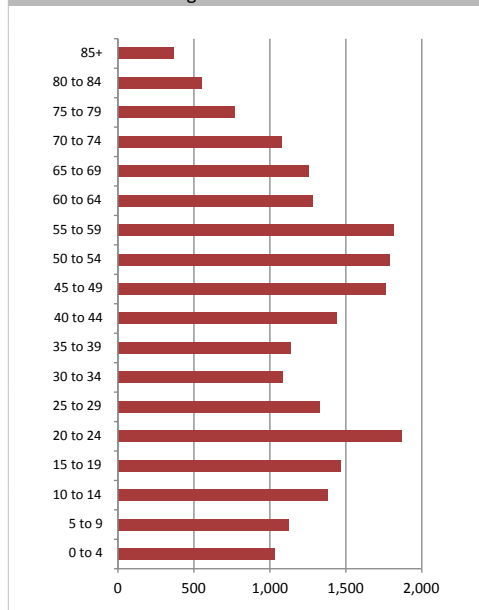
% of Households by Household Size



Age Cohorts

Population: 25 yrs and under	6,827	30.5%
Population: 25-54 yrs	8,472	37.9%
Population: Over 55 yrs	7,055	31.6%
Median Age	42.9	

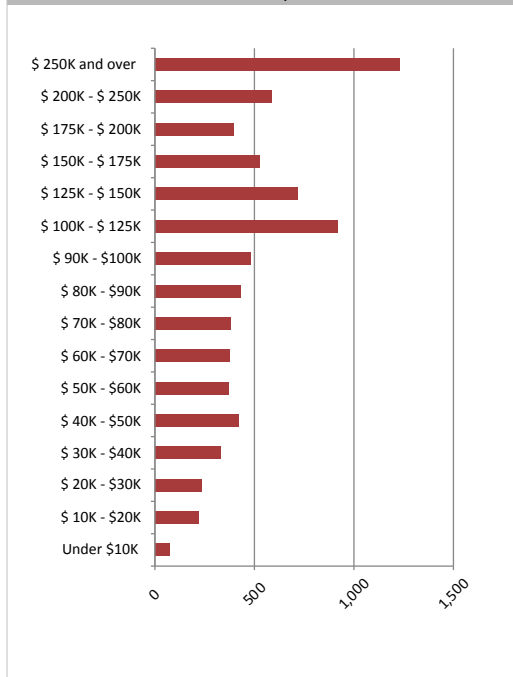
Age Distribution



Household Income

Average Household Income	\$186,073
Median Household Income	\$114,882

Households by Income



Visible Minorities & Language

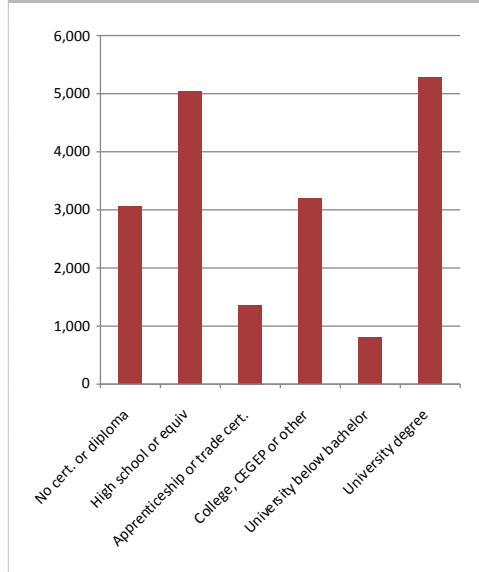
Population by Visible Minority	
Chinese	1.1%
South Asian	1.0%
Black	0.2%
Filipino	0.5%
Latin American	1.1%
Southeast Asian	0.3%
Arab	0.2%
West Asian	0.4%
Korean	0.2%
Japanese	0.3%
Visible minority, n.i.e.	0.5%
Multiple visible minorities	0.2%

Population by Mother Tongue	
Single Responses	98.2%
English	73.5%
French	0.9%
Non-Official languages	23.8%
Multiple responses	1.8%

Educational Attainment (15 Yrs +)

No cert. or diploma	3,059	16.3%
High school or equiv	5,032	26.9%
Apprenticeship or trade cert.	1,366	7.3%
College, CEGEP or other	3,200	17.1%
University below bachelor	800	4.3%
University degree	5,283	28.2%

% of Population by Education



King Connection

Map

