

### Market Information

#### Average Household Spending / Yr

Mortgage payments	\$	5,230
Cell Phone and Internet	\$	1,137
Home Renovations	\$	3,620
Retirement & pension fund payments	\$	3,054
Lotteries	\$	116
Health Insurance	\$	653
Household appliances	\$	350
Furnishings	\$	49
Computer hardware	\$	400
Auto/Truck Purchase	\$	2,798
Auto/Truck Rental or Lease	\$	794
Air Travel	\$	935

#### Age of Home Owners

15 to 24 years	3,733	5.5%
25 to 34 years	13,492	19.9%
35 to 44 years	11,781	17.4%
45 to 54 years	12,642	18.7%
55 to 64 years	11,087	16.4%
65 to 74 years	7,517	11.1%
75 years or over	7,388	10.9%

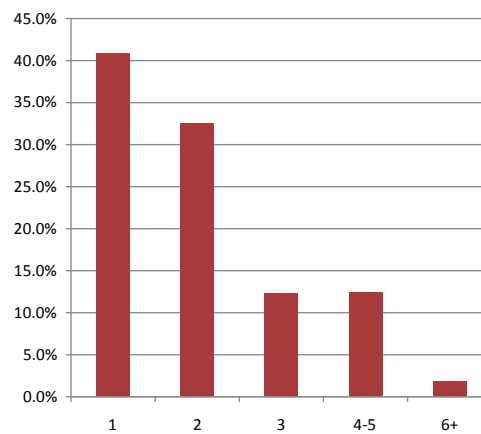
### Population & Household Summary

Total Population	142,190
Population Growth 2009-2014	3.7%
Population Growth 2014-2019	2.0%

Total Households	67,639
Household Growth 2009-2014	6.8%
Household Growth 2014-2019	7.2%

% of Households with Children	29.1%
% of Households - Married w/ Kids	18.9%
% of Households - Single Parent	10.2%

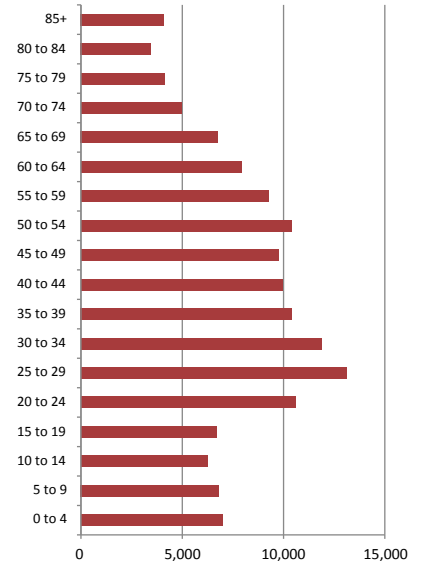
#### % of Households by Household Size



### Age Cohorts

Population: 25 yrs and under	36,937	26.0%
Population: 25-54 yrs	65,134	45.8%
Population: Over 55 yrs	40,118	28.2%
Median Age	39.5	

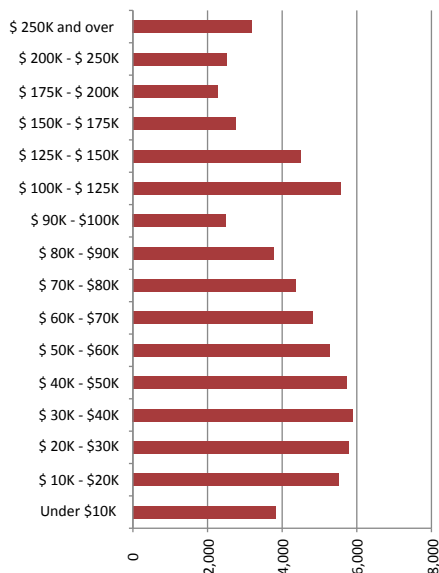
#### Age Distribution



### Household Income

Median Household Income	\$92,000
Average Household Income	\$64,254

#### Households by Income



### Visible Minorities & Language

#### Population by Visible Minority

Chinese	4.5%
South Asian	2.9%
Black	6.0%
Filipino	1.1%
Latin American	1.3%
Southeast Asian	2.3%
Arab	3.4%
West Asian	1.1%
Korean	0.3%
Japanese	0.3%
Visible minority, n.i.e.	0.3%
Multiple visible minorities	0.8%

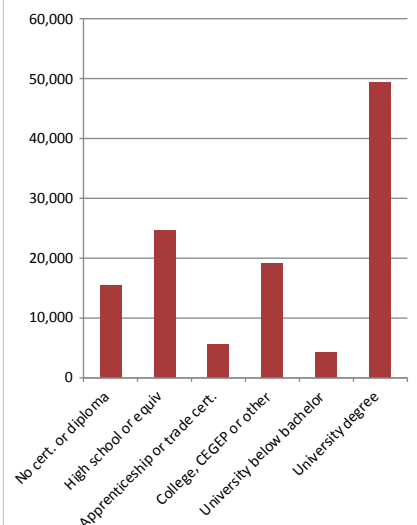
#### Population by Mother Tongue

Single Responses	97.0%
English	64.3%
French	8.4%
Non-Official languages	24.3%
Multiple responses	2.9%

### Educational Attainment

No cert. or diploma	15,481	13.1%
High school or equiv	24,723	20.9%
Apprenticeship or trade cert.	5,588	4.7%
College, CEGEP or other	19,057	16.1%
University below bachelor	4,281	3.6%
University degree	49,408	41.7%

#### % of Population by Education



Map

