

Sarnia/Lambton County This Week



Summary Report

June 10, 2015

Market Information

Average Household Spending / Yr

Mortgage payments	\$	5,837
Cell Phone and Internet	\$	1,022
Home Renovations	\$	3,003
Retirement & pension fund payments	\$	3,430
Lotteries	\$	172
Health Insurance	\$	693
Household appliances	\$	508
Furnishings	\$	43
Computer hardware	\$	353
Auto/Truck Purchase	\$	4,395
Auto/Truck Rental or Lease	\$	900
Air Travel	\$	599

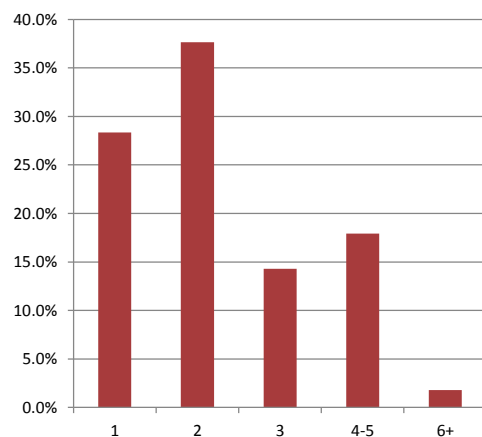
Age of Home Owners

15 to 24 years	1,717	3.3%
25 to 34 years	6,816	13.0%
35 to 44 years	7,188	13.7%
45 to 54 years	9,950	19.0%
55 to 64 years	11,424	21.8%
65 to 74 years	8,403	16.0%
75 years or over	6,880	13.1%

Population & Household Summary

Total Population	123,366
Population Growth 2009-2014	-0.4%
Population Growth 2014-2019	-0.2%
Total Households	52,377
Household Growth 2009-2014	3.4%
Household Growth 2014-2019	4.1%
% of Households with Children	38.3%
% of Households - Married w/ Kids	27.4%
% of Households - Single Parent	10.8%

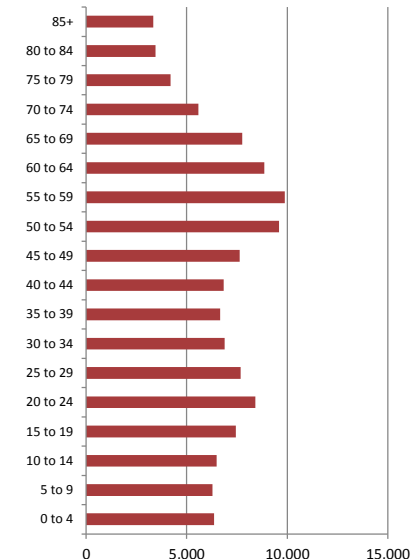
% of Households by Household Size



Age Cohorts

Population: 25 yrs and under	34,990	28.4%
Population: 25-54 yrs	45,303	36.7%
Population: Over 55 yrs	43,072	34.9%
Median Age	44.0	

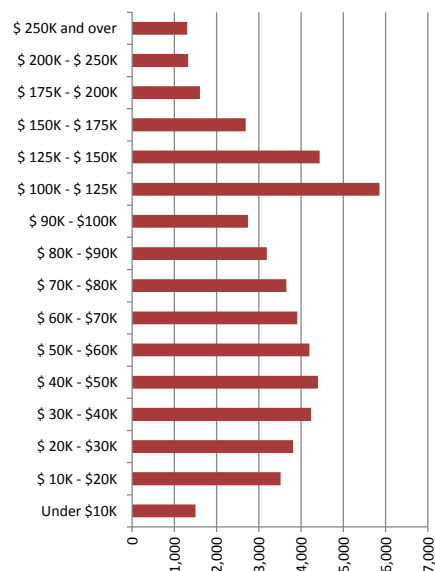
Age Distribution



Household Income

Median Household Income	\$89,931
Average Household Income	\$71,683

Households by Income



Visible Minorities & Language

Population by Visible Minority

Chinese	0.5%
South Asian	1.0%
Black	0.7%
Filipino	0.3%
Latin American	0.3%
Southeast Asian	0.1%
Arab	0.1%
West Asian	0.0%
Korean	0.1%
Japanese	0.0%
Visible minority, n.i.e.	0.1%
Multiple visible minorities	0.2%

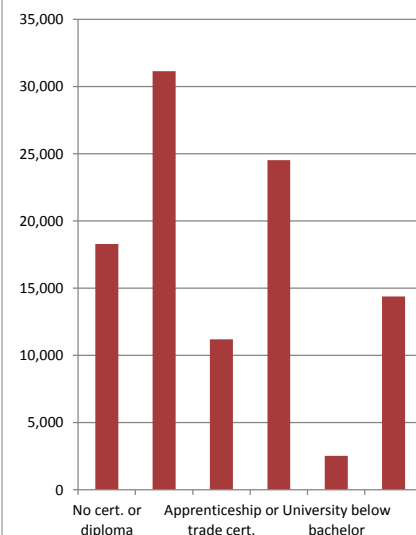
Population by Mother Tongue

Single Responses	99.3%
English	90.4%
French	2.1%
Non-Official languages	6.7%
Multiple responses	0.8%

Educational Attainment

No cert. or diploma	18,281	17.9%
High school or equiv	31,145	30.5%
Apprenticeship or trade cert.	11,190	11.0%
College, CEGEP or other	24,526	24.0%
University below bachelor	2,533	2.5%
University degree	14,378	14.1%

% of Population by Education



Map

