

Waterdown Flamborough Review



Summary Report

January 5, 2015

Market Information

Average Household Spending / Yr

Mortgage payments	\$	10,035
Cell Phone and Internet	\$	1,125
Home Renovations	\$	4,898
Retirement & pension fund payments	\$	4,726
Lotteries	\$	182
Health Insurance	\$	757
Household appliances	\$	653
Furnishings	\$	61
Computer hardware	\$	419
Auto/Truck Purchase	\$	5,024
Auto/Truck Rental or Lease	\$	1,281
Air Travel	\$	850

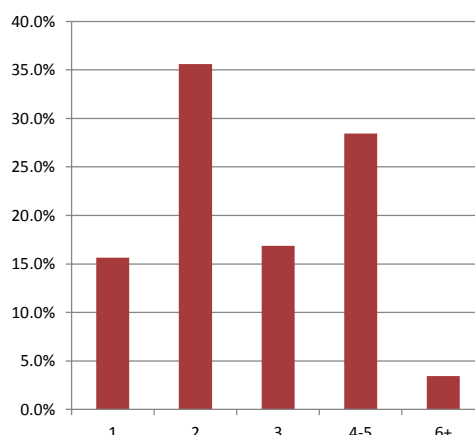
Age of Home Owners

15 to 24 years	197	1.2%
25 to 34 years	1,647	10.4%
35 to 44 years	2,666	16.9%
45 to 54 years	4,037	25.6%
55 to 64 years	3,313	21.0%
65 to 74 years	2,212	14.0%
75 years or over	1,702	10.8%

Population & Household Summary

Total Population	43,832
Population Growth 2009-2014	6.3%
Population Growth 2014-2019	12.9%
Total Households	15,774
Household Growth 2009-2014	11.9%
Household Growth 2014-2019	20.6%
% of Households with Children	48.6%
% of Households - Married w/ Kids	40.4%
% of Households - Single Parent	8.2%

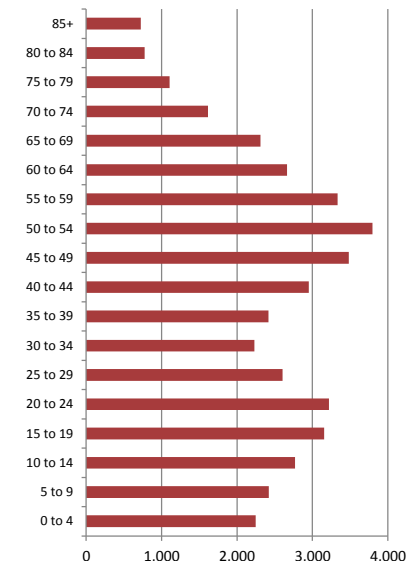
% of Households by Household Size



Age Cohorts

Population: 25 yrs and under	13,817	31.5%
Population: 25-54 yrs	17,485	39.9%
Population: Over 55 yrs	12,530	28.6%
Median Age	41.4	

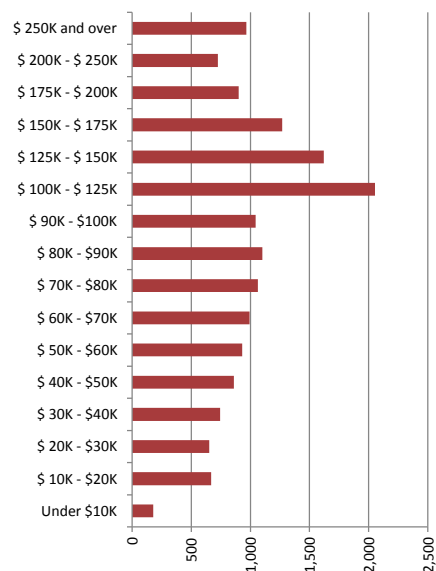
Age Distribution



Household Income

Median Household Income	\$124,793
Average Household Income	\$96,645

Households by Income



Visible Minorities & Language

Population by Visible Minority

Chinese	0.4%
South Asian	1.1%
Black	0.8%
Filipino	0.2%
Latin American	0.4%
Southeast Asian	0.1%
Arab	0.1%
West Asian	0.2%
Korean	0.2%
Japanese	0.1%
Visible minority, n.i.e.	0.3%
Multiple visible minorities	0.2%

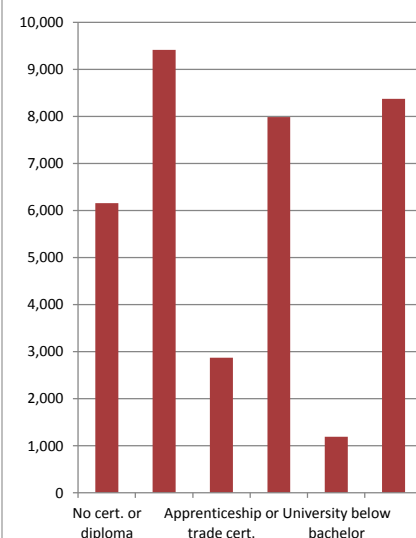
Population by Mother Tongue

Single Responses	99.1%
English	87.6%
French	1.3%
Non-Official languages	10.2%
Multiple responses	0.9%

Educational Attainment

No cert. or diploma	6,155	17.1%
High school or equiv	9,413	26.2%
Apprenticeship or trade cert.	2,871	8.0%
College, CEGEP or other	7,984	22.2%
University below bachelor	1,191	3.3%
University degree	8,371	23.3%

% of Population by Education



Map

