

Market Information

| Average Household Spending / Yr | | |
|------------------------------------|----|-------|
| Mortgage payments | \$ | 5,250 |
| Cell Phone, Pager & Services | \$ | 962 |
| Internet Access Services | \$ | 498 |
| Home Renovations | \$ | 1,306 |
| Retirement & pension fund payments | \$ | 1,572 |
| Lotteries | \$ | 903 |
| Health Insurance | \$ | 900 |
| Household appliances | \$ | 678 |
| Furnishings | \$ | 1,291 |
| Computer hardware | \$ | 128 |
| Auto/Truck Purchase | \$ | 7,559 |
| Auto/Truck Rental or Lease | \$ | 85 |
| Air Travel | \$ | 747 |

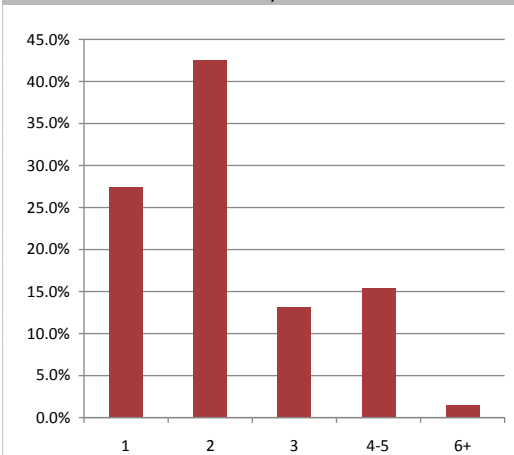
Age of Home Owners

| | | |
|------------------|-------|-------|
| 15 to 24 years | 122 | 1.2% |
| 25 to 34 years | 828 | 8.4% |
| 35 to 44 years | 800 | 8.1% |
| 45 to 54 years | 1,881 | 19.0% |
| 55 to 64 years | 2,372 | 24.0% |
| 65 to 74 years | 2,263 | 22.8% |
| 75 years or over | 1,636 | 16.5% |

Population & Household Summary

| | |
|-----------------------------------|--------|
| Total Population | 22,951 |
| Population Growth 2012-2017 | 0.1% |
| Population Growth 2017-2022 | 1.3% |
| Total Households | 9,902 |
| Household Growth 2012-2017 | 0.3% |
| Household Growth 2017-2022 | 1.1% |
| % of Households with Children | 32.1% |
| % of Households - Married w/ Kids | 24.1% |
| % of Households - Single Parent | 7.9% |

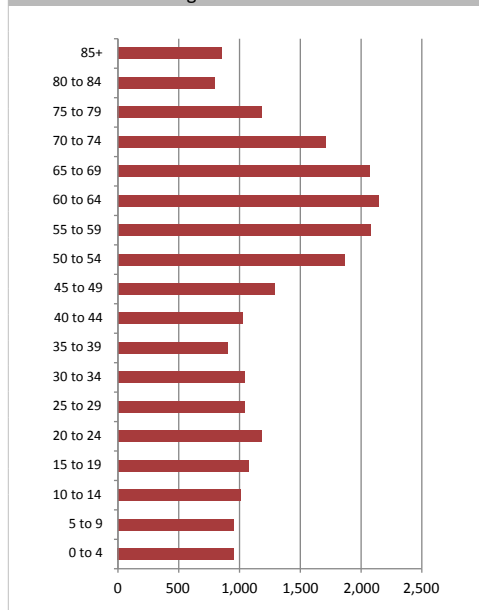
% of Households by Household Size



Age Cohorts

| | | |
|------------------------------|--------|-------|
| Population: 25 yrs and under | 5,110 | 22.3% |
| Population: 25-54 yrs | 7,094 | 30.9% |
| Population: Over 55 yrs | 10,747 | 46.8% |
| Median Age | 53.0 | |

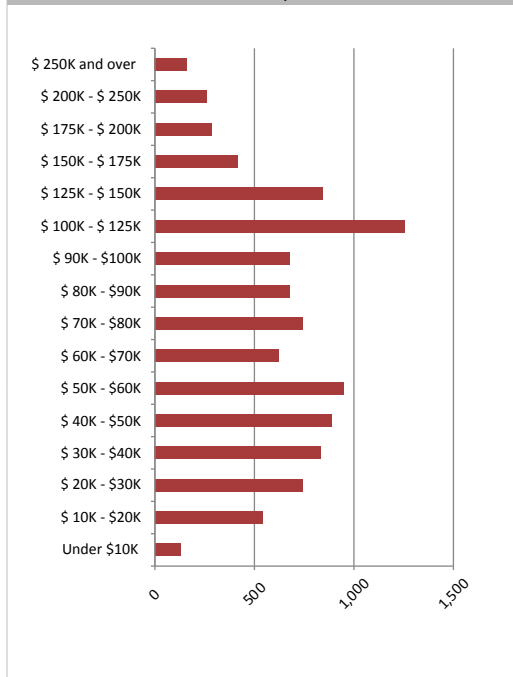
Age Distribution



Household Income

| | |
|--------------------------|----------|
| Average Household Income | \$86,639 |
| Median Household Income | \$74,074 |

Households by Income



Visible Minorities & Language

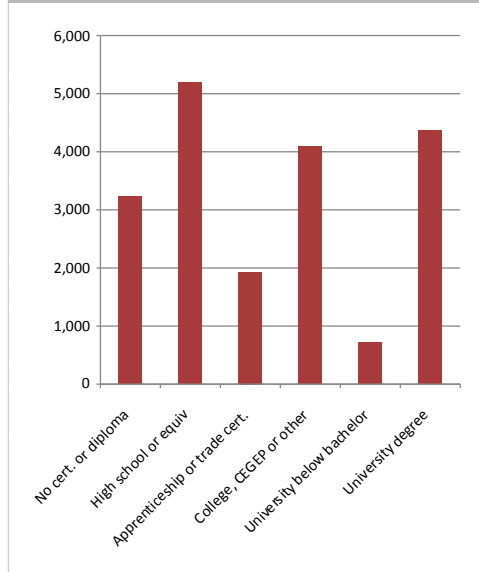
| Population by Visible Minority | |
|--------------------------------|------|
| Chinese | 0.2% |
| South Asian | 0.3% |
| Black | 0.1% |
| Filipino | 0.0% |
| Latin American | 0.1% |
| Southeast Asian | 0.0% |
| Arab | 0.0% |
| West Asian | 0.0% |
| Korean | 0.0% |
| Japanese | 0.0% |
| Visible minority, n.i.e. | 0.1% |
| Multiple visible minorities | 0.3% |

| Population by Mother Tongue | |
|-----------------------------|-------|
| Single Responses | 99.5% |
| English | 94.3% |
| French | 2.9% |
| Non-Official languages | 2.3% |
| Multiple responses | 0.5% |

Educational Attainment (15 Yrs +)

| | | |
|-------------------------------|-------|-------|
| No cert. or diploma | 3,235 | 16.6% |
| High school or equiv | 5,187 | 26.6% |
| Apprenticeship or trade cert. | 1,932 | 9.9% |
| College, CEGEP or other | 4,091 | 20.9% |
| University below bachelor | 720 | 3.7% |
| University degree | 4,370 | 22.4% |

% of Population by Education



Perth Courier



Distribution Map

Map

